

Futaba File System Utility for T12FG/T8FG

(Version 2.0)

T12FG and T8FG use original file system that is different from a general file system (FAT, NTFS etc) of personal computer. Therefore, you cannot copy the model data from the SD card onto PC by using the Windows Explorer.

You have to use our utility software (Futaba File System Utility) to copy the model data between T12FG/T8FG and the PC.

* The previous versions (before version 2.0) do not correspond to T8FG.

System requirements

- Microsoft Windows2000, Windows XP, Windows Vista
- Necessary memory and CPU specification is equal the system requirements of Operating System.

1. Installation

There is not installer. You have to only extract the compression file.

2. Uninstallation

There is not special uninstallation procedure. You have to only delete the file.

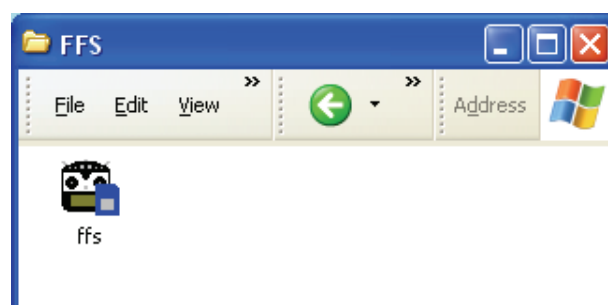
*When FFS of the previous version has already been installed, please install FFS of the upgrade version after uninstalling of the previous version. Or please copy FFS of the upgrade product onto the previous version in the superscription.

3. Mount of SD card

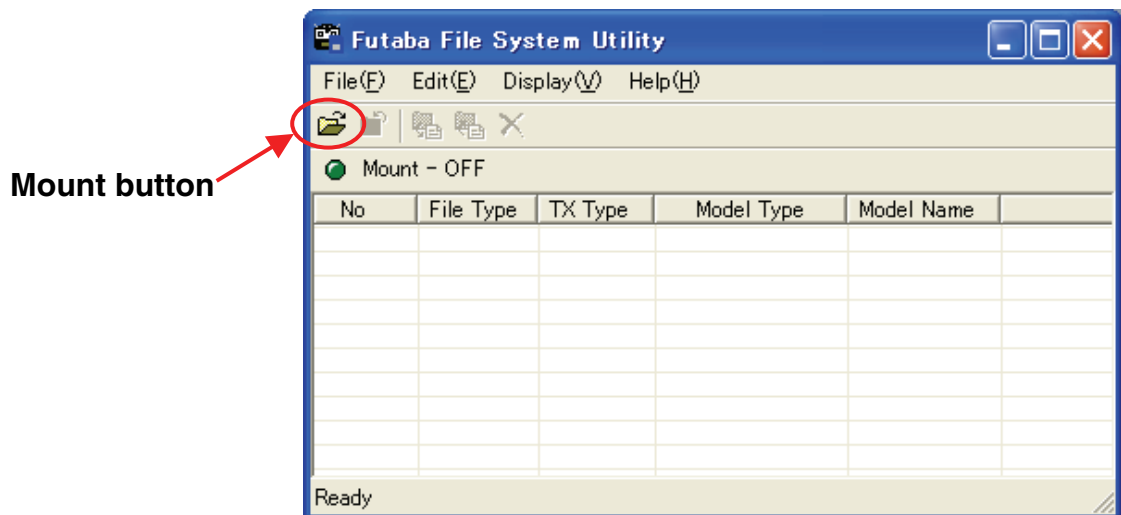
To handle the SD card by this utility, you have to open the card. This operation is called "mount".

3.1. Please attach the SD card to the card reader.

3.2. Please run the utility software (FFS.EXE).



3.3. The utility software starts, and the following screens are displayed. Please select "File" menu → "Mount" menu or push the mount button.



3.4. The selection dialog of the drive is displayed. Please select the icon of SD card drive, and push the "OK" button.



3.5. When the utility software finish mount process, it display the content of the card.

No. : file index

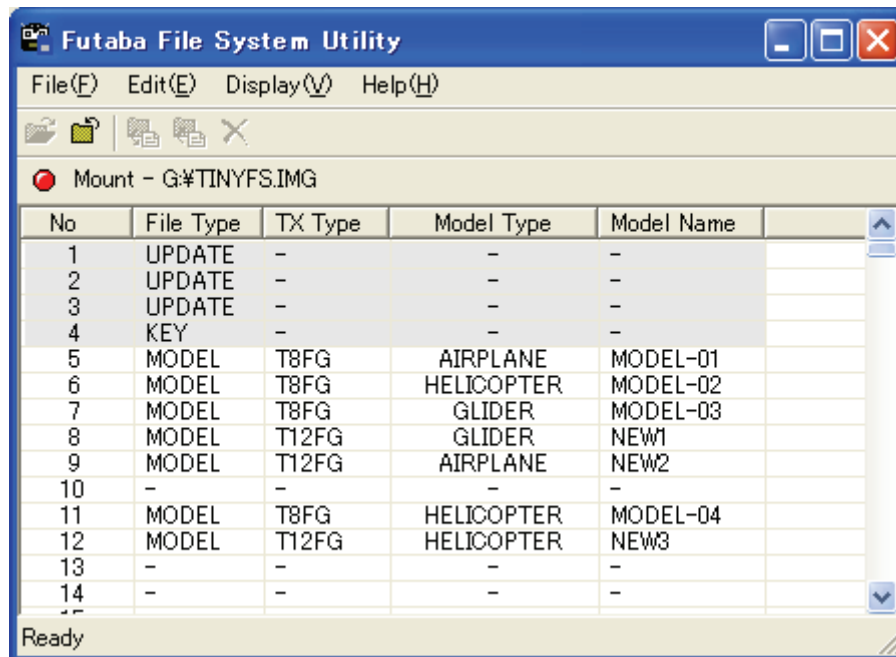
File Type : refer to following table.

File Type	Content
MODEL	They are files of Model data. You cannot write to file index of first to fourth, because file index of first to fourth is system reserved.
UPDATE	They are files for software update.
KEY	They are files for software update of T8FG.
-	Not used.

Model Type : refer to following table.

Model Type	content
AIRPLANE	They are the airplane models.
HELICOPTER	They are the helicopter models.
GLIDER	They are the glider models.
-	They are not used or not model data.

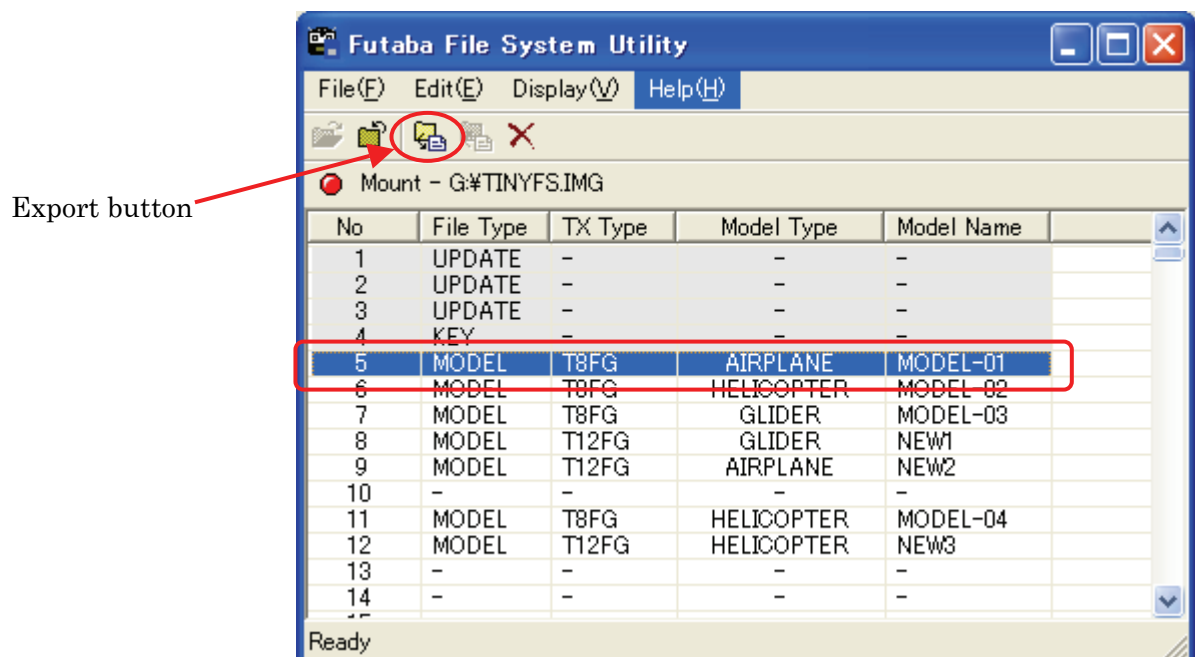
Model Name : Model name is displayed.



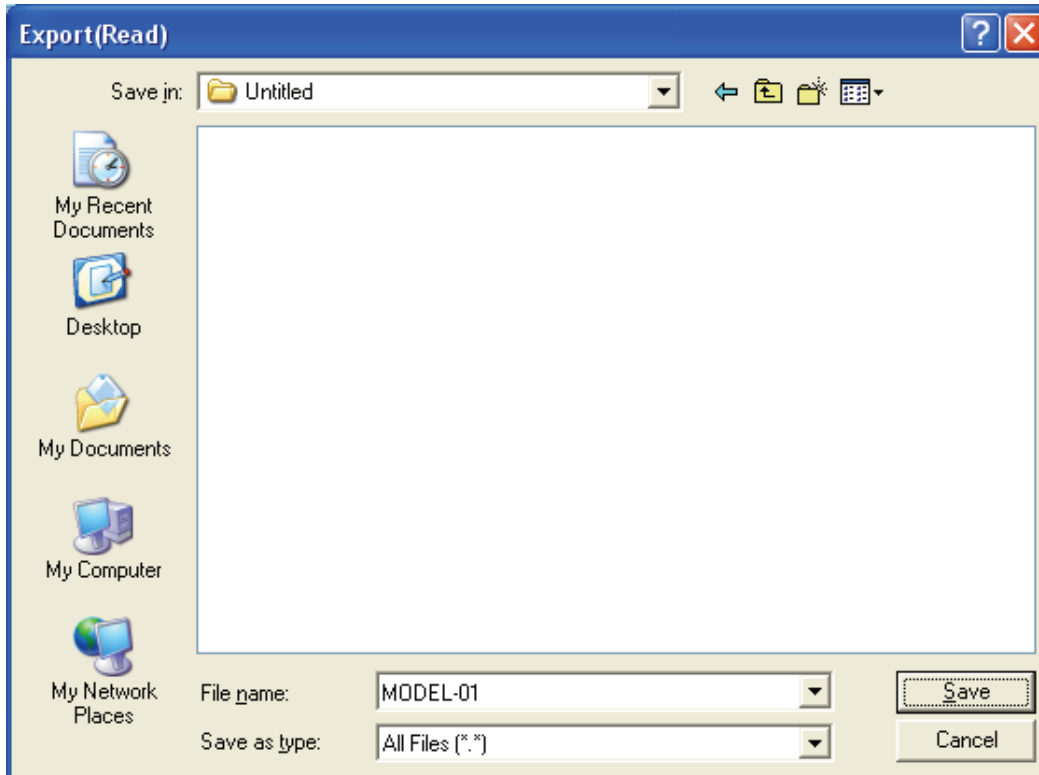
4. Read from SD card (export)

4.1. Please select the model data.

4.2. Please select "Edit" menu → "Export" menu or push the export button.



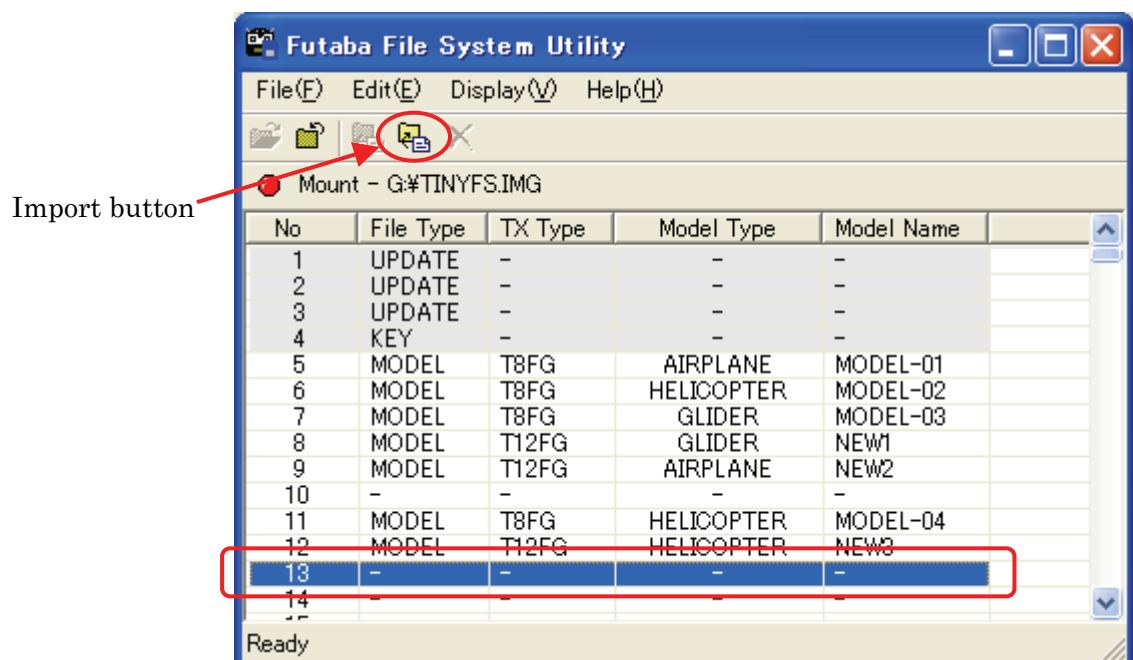
4.3. Export dialog is displayed. Please select destination of copy and push "Save" button. The utility software copy the model data from SD card to the selected folder of your PC.



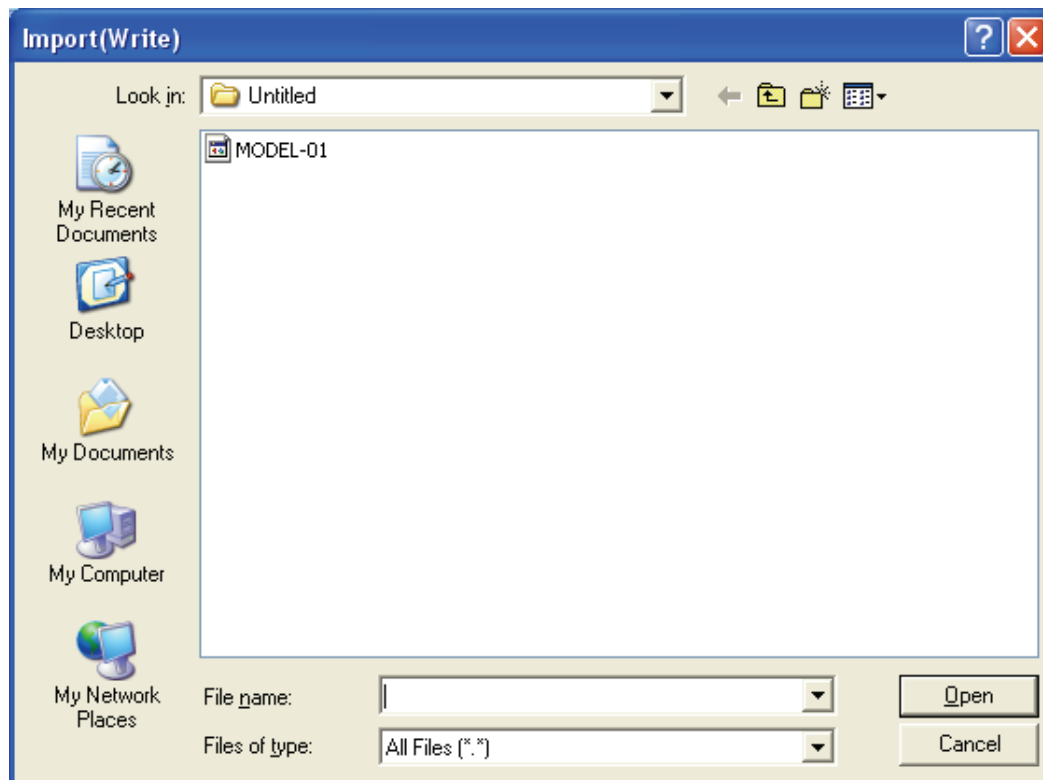
5. Write to model data (import)

5.1. Please select the destination of writing the model data.

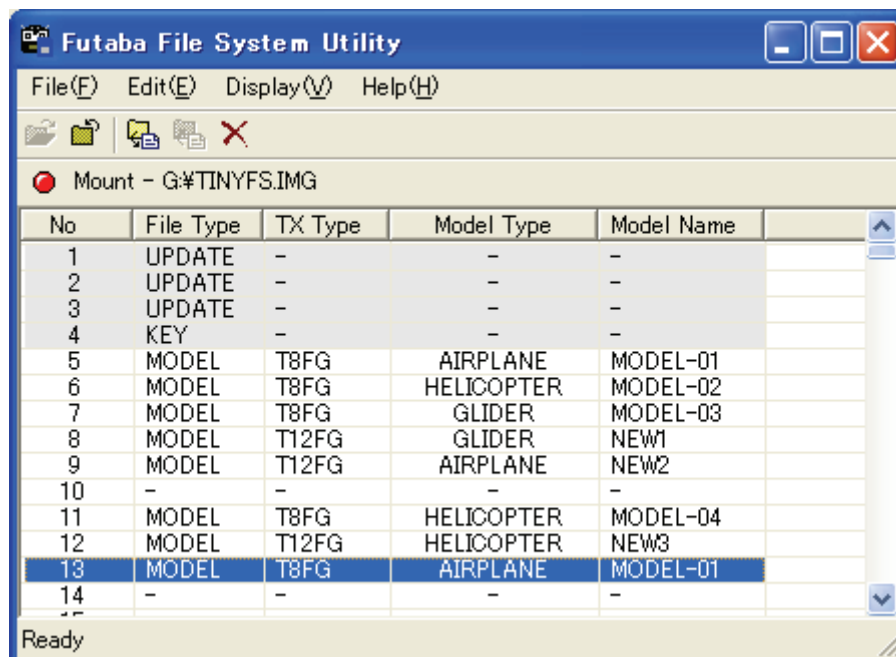
5.2. Please select "Edit" menu → "Import" menu or push the import button.



5.3. Import dialog is displayed. Please select the model data and push "Open" button.



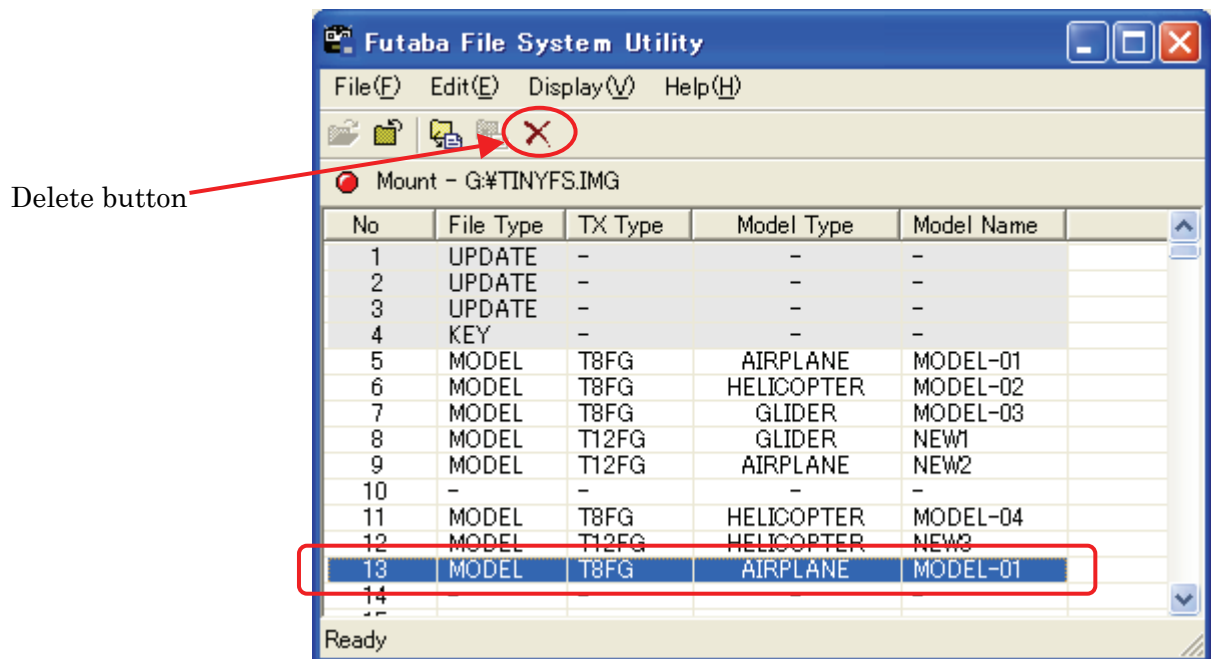
5.4. The utility software copy the model data to the SD card.



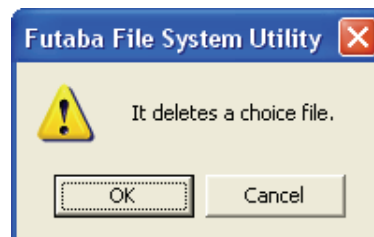
6. Delete model data

6.1. Please select the model data.

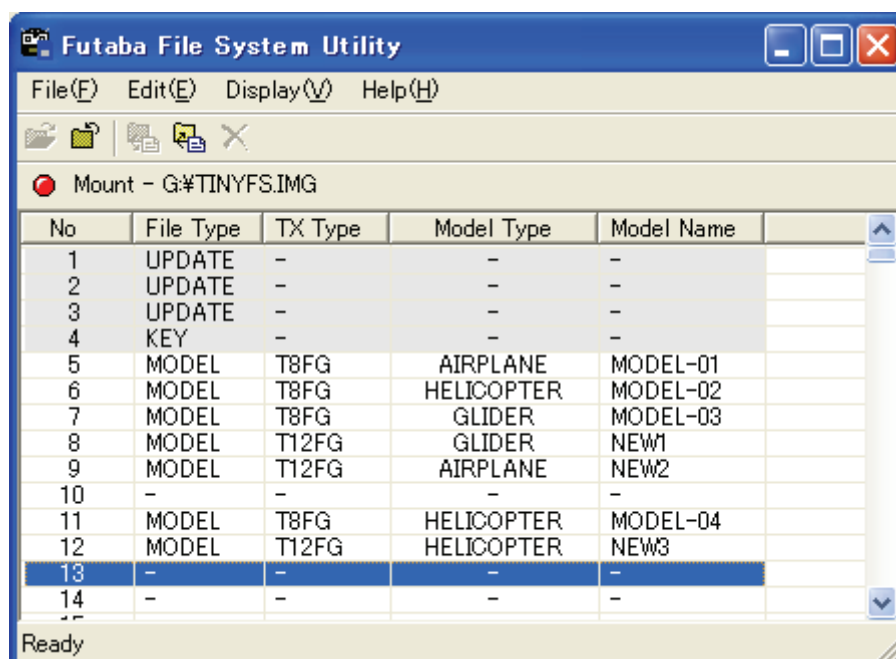
6.2. Please select "Edit" menu → "Delete" menu or push the delete button.



6.3. The confirm dialog is displayed. Push "OK" button.

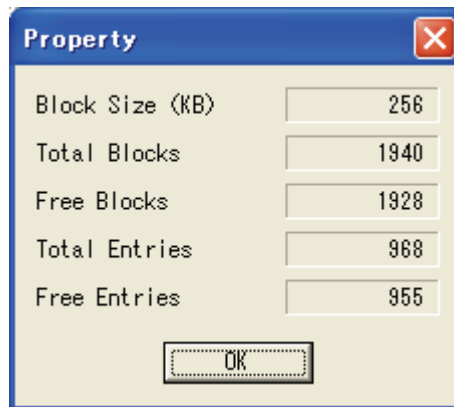


6.4. The utility software delete the selected model data.



7. Display SD card information

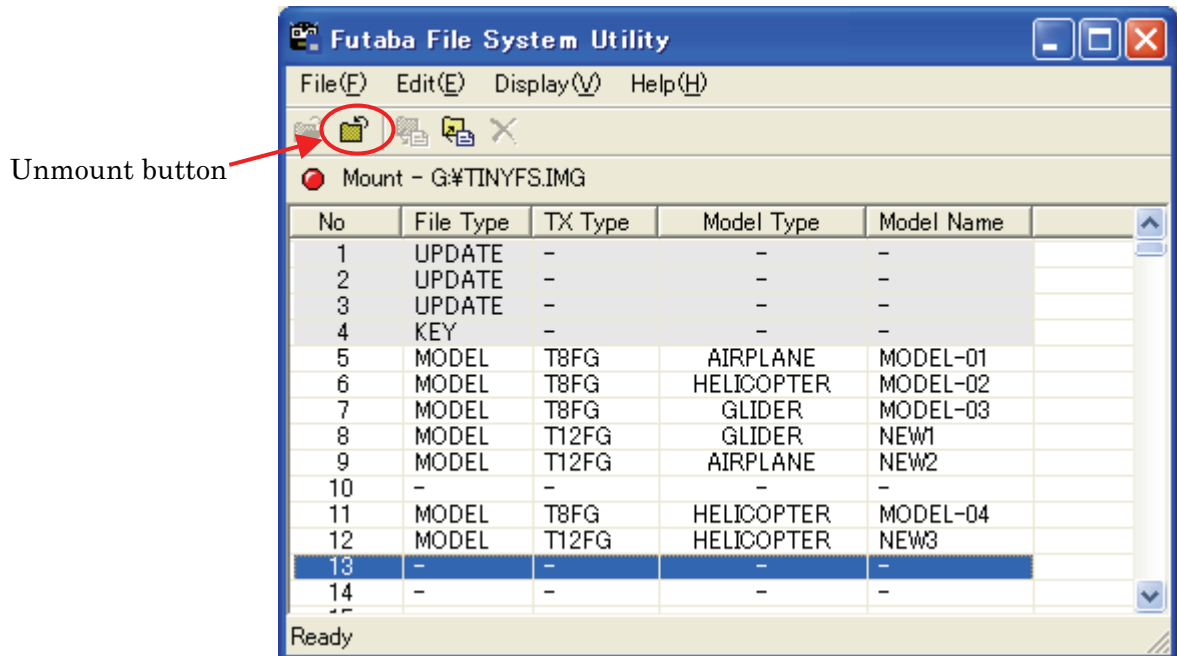
7.1. Please select "Display" menu → "Property" menu. The utility software displays the card information dialog.



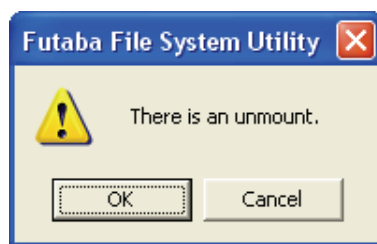
8. Unmount SD card

Before SD card detach the card reader, You have to close the SD card. This operation is called "unmount".

8.1. Please select "File" menu → "Unmount" menu or push the unmount button.



8.2. The confirm dialog is displayed, Push "OK" button.



8.3. You can detach the SD card, after this operation.